

Search Site &amp; Collections

SEARCH

[about](#) [education](#) [blog](#) [press](#) [donate](#)

NARROW YOUR RESULTS

GO

REFINE YOUR RESULTS

- Show only digital media
- Show only collection guides

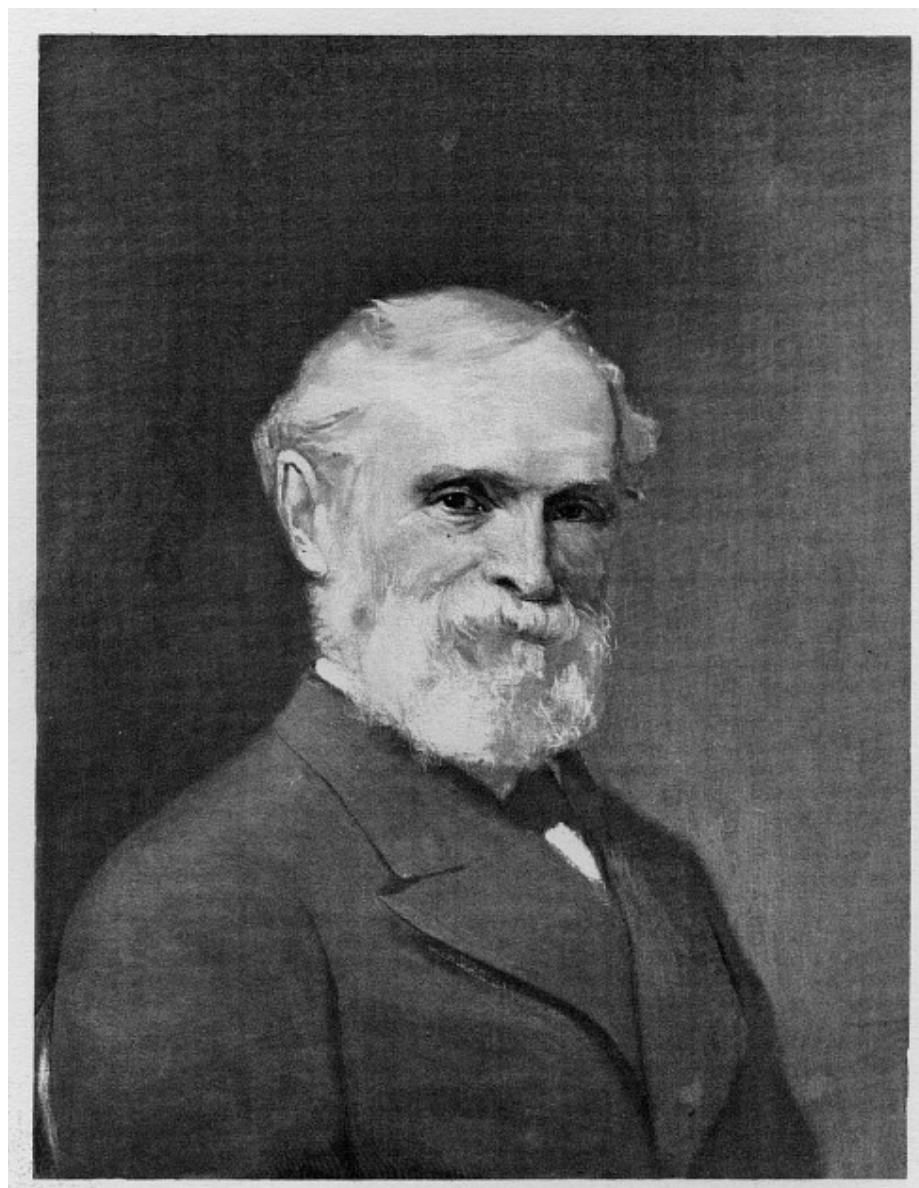
FILTER YOUR RESULTS

**Expeditions****Smithsonian Museum & Research Centers****Smithsonian Records****Smithsonian Secretaries****Personal Papers****Professional Societies****Oral Histories**

# Thomas George Hodgkins

[Download image](#) | [Request permissions](#) | [Share](#) | [Print](#)

<b>Creator:</b>	Hardie, Robert Gordon
<b>Title:</b>	Thomas George Hodgkins
<b>Creator:</b>	National Portrait Gallery (U.S.)
<b>Data Source:</b>	<a href="#">Smithsonian Archives - History Div</a>
<b>Date:</b>	1893
<b>Notes:</b>	Original negative number is SA-683, 10182, but that negative has been lost. Original painting is brown, SIA has one color print.
<b>Summary:</b>	Thomas George Hodgkins, 1803-1892, benefactor of the Smithsonian Institution, left an initial bequest of \$200,000 to the Institution for research, especially on the atmosphere. Hodgkins Medal is given in his name. This photograph is of a bust portrait located at the National Portrait Gallery.
<b>Contained in:</b>	Smithsonian Institution Archives, Record Unit 95, Box 13, Folder: 28
<b>Restrictions:</b>	No restrictions
<b>Topics:</b>	Research, Gifts, Benefactors, Portraits, Atmosphere--Research, Donors, Philanthropists
<b>Subjects:</b>	Hodgkins, Thomas George, National Portrait Gallery (U.S.), National Collection of Fine Arts
<b>Category:</b>	Historic Images of the Smithsonian
<b>Form/Genre:</b>	Painting
<b>Local Number:</b>	2002-12203 or SA-683 or 10182
<b>Physical Description:</b>	Color: Color; Size: 4.5 x 6; Type of Image: Portrait; Medium: Painting
<b>Full Record:</b>	<a href="http://siris-sihistory.si.edu/ipac20/ipac.jsp?&amp;profile=sicall&amp;source=~!sichronology&amp;uri=full=3100001~!9144~!0#focus">http://siris-sihistory.si.edu/ipac20/ipac.jsp?&amp;profile=sicall&amp;source=~!sichronology&amp;uri=full=3100001~!9144~!0#focus</a>



### Using the Archives' Collections

The Smithsonian Institution Archives welcomes personal and educational use of its collections unless otherwise noted. Please cite the Smithsonian Institution Archives as the source of the content, and when possible, link to the Smithsonian Archives website ([siarchives.si.edu](https://siarchives.si.edu)). Please [let us know](#) how you are using our collections for your projects. If you would like to see a collection in person, please note that most records and special collections are stored off-site, so researchers should contact the [Reference Team](#) at least one week prior to visiting to ensure that records can be made available in the Archives Reading Room. For information on commercial licensing or other uses, visit [Rights and Reproductions](#). More information available within the [Smithsonian's Terms of Use](#) policy.

Note: In order to access PDFs, you must have the [Adobe Acrobat Reader software](#) which is available free of charge.

[Smithsonian Institution](#) | [Privacy](#)  
| [Terms of Use](#) | [Contact](#)